

Health Care to Below Poverty Line Rural Families

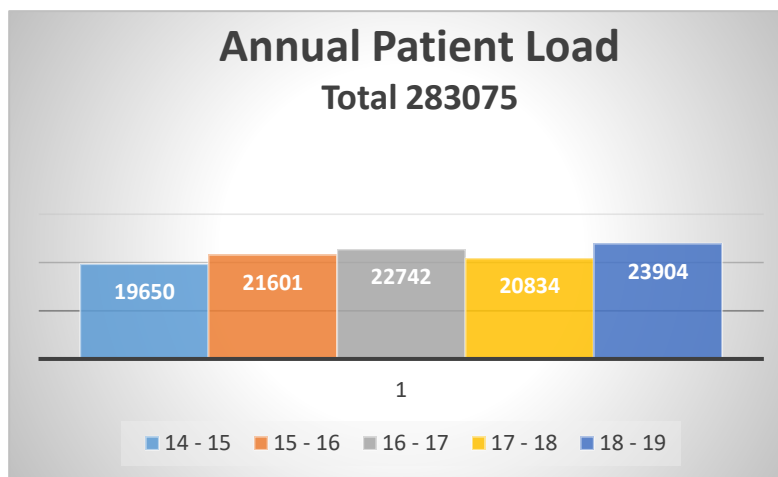


Annual Report 2018 - 19

OUTPATIENT

The year past has kept the RHC as busy as ever, with **23904** (an increase of 14%) accessing the health centre. This inspite of a moratorium on registering new patients. In our 19th year of functioning 283,075 patients have been treated at the RHC.

The OPD data for the year past as well as the trend line for the past five years is shown below.



96% of our patients had Annual Incomes of < 60000 pa (the official BPL line)

PROGRAMMES - patient participatory

Eye Care

All patients screened for Cataract are being done free through Governmental Programmes. Younger patients needed counselling on eye care with smart phone/computer usage. A few surgeries and glasses were subsidised.

Ante Natal

All deliveries were Institutional. Working with the ASHAs has proved helpful. They are involved in tracking mothers through pregnancy, delivery, post-natal care as well as babies through their 1st year. Hospital deliveries are partly supported.

Under 15s

1932 children: Diagnoses ranging from Common Cold, Viral fevers, Type I Diabetes, Malnutrition to various Congenital disorders. Care for children from within the Valley is subsidised
Hospital admissions for all children are subsidised depending on fund availability

Senior Citizens

5715 elder citizens. Diagnoses ranged from Non Communicable Diseases, Malnutrition, Malignancies, Degenerative disorders etc
Care is subsidised depending upon the level of financial support available

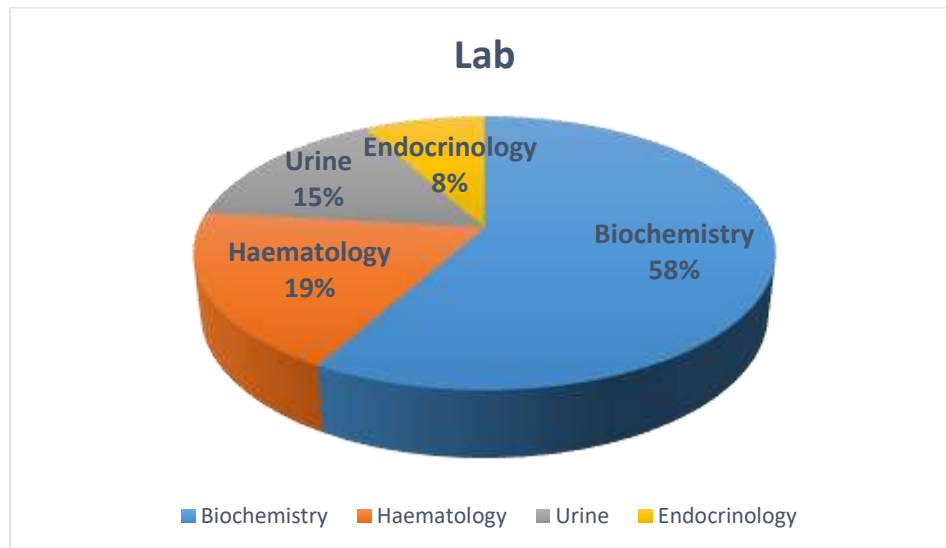
DIAGNOSTIC CENTRE

More than **50,000** tests done. (about the same as last year), driven primarily by the number of patients with hypertension and diabetes.

Laboratory

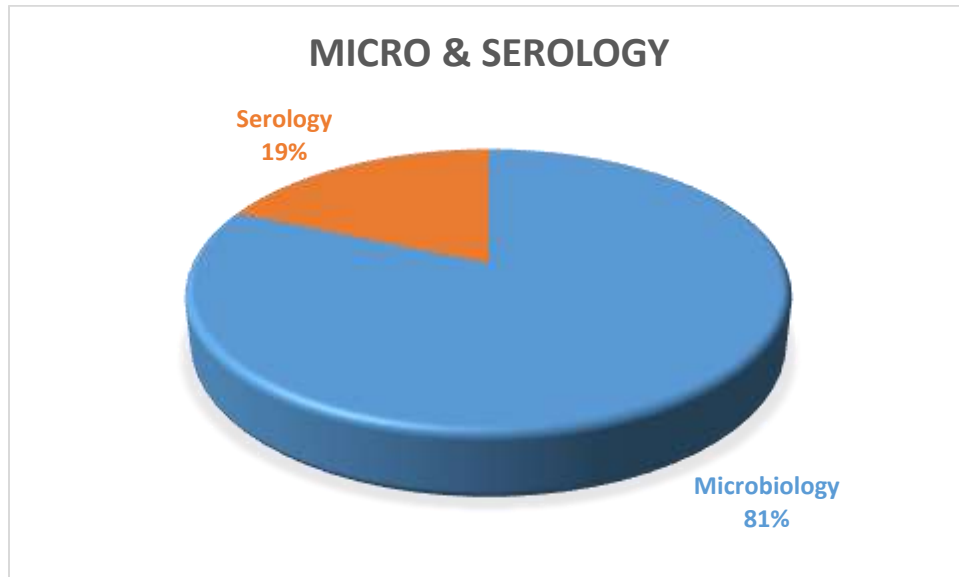
Equipment: Automated Urine, Hematology, 3 para coagulation analysers. Semi-Automatic Biochemistry analyser, HbA1C.

Higher end tests particularly for endocrine assays are being sent to a NABL accredited lab in Hyderabad



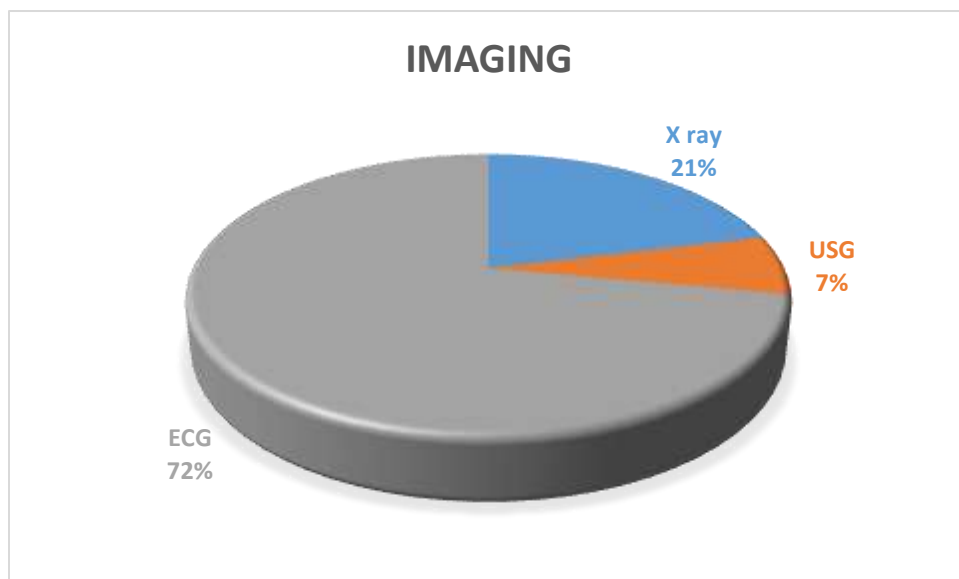
Microbiology

Fully equipped to handle bacterial cultures from all specimens - about 600 cultures done annually



Imaging

X ray - a 100 mA X ray, Part time radiographer - 415 X Rays done - primarily of the Chest
Ultrasound - About 130 done - a very useful adjunct to diagnosis



ELECTRONIC MEDICAL RECORDS: The system is working well. It has helped trace records of patients who have misplaced their case sheets, data retrieval etc.

Research Projects:

1. **cVEDA (Consortium for the Assessment of Vulnerabilities to Externalising Disorders and Addictions):** www.cveda.org

Rishi Valley Rural Health Centre is one of the sites for this joint ICMR (Indian Council of Medical Research) - MRC UK (Medical Research Council) research project. This is a multicentric study aimed at assessing possible cause factors for various mental health issues.

In the last one year we were able to achieve our target of 750 participants.

Participants	Comp Data	Bloods	Saliva	Urine	MRI
776	773	761	15	776	233

Age (Mean & SD)	Female: Male	Age Bands C1:C2:C3	Students
11.53 (4.12)	50.1:49.9	58:29:11	90.9%

The follow up of all participants - which includes a telephonic questionnaire and repeat MRIs for those who had them in year 1, is continuing. This follow up phase will get over in March 2020.

2. **VASCULAR DISEASES:** A skeleton staff maintains the deep freezes and samples stored in them. Data analysis is ongoing at Monash University in Melbourne. We will be starting our follow ups of our participants in September 2019.

Research Publications

For an updated list please click on the following link:

https://www.researchgate.net/profile/Kartik_Kalyanram/publications

Donors

Without our many donors, the RHC would not be able to function. Many donors small and large have contributed to the growth of the RHC. Each one of our donors are important for us, very small bit helps in our endeavours. I would, on behalf of all the patients who have benefited take the opportunity to thank all of them.

The Rishi Valley Alumni Association set up in the US, has been in the forefront of raising funds. Thank you all at RiVAA for this.

Donation Options

We have re worked our donation options and updated the same on our website. www.rishivalley.org

Essentially the Health Centre is looking to set up a **corpus**, the interest from which would help us in meeting our budget deficit. I would request any interested donors/philanthropists to contact me directly.

All donations in India get a tax benefit u/s 80 G of IT act in India.

In the US: Please donate through **Rishi Valley Alumni Association - RiVAA** (www.rivaa.org) a not for profit 501 (C) (3) organization.

Email to donate@rivaa.org

In the UK: Please donate through

Shishukunj International: <http://www.shishukunj.net>

Contact: Manish Shah: manish_shah@yahoo.co.uk , info@shishukunj.net
 Tel: 00449854141216
 Shishukunj, Shishukunj Bhavan, 25-27 High Street,
 Edgware, Middx, HA8 7EE, Tel/Fax: 020 8381 1818

FINANCIALS

RISHI VALLEY RURAL HEALTH CENTRE			
(Figures in thousands)			
Income		Expenditure	
Donations	3780	Total Expenditure before depreciation	8345
Other income including Consultations	3577	Depreciation	471
Total Income	7357	Total Expenditure	8817

Excess of Expenditure over Income: (14,60,00)

During the year donation of Rs.10,38,048/- was received towards corpus fund.

The closing balance of the Corpus Fund is Rs.143.00 lakhs.

(NB: Detailed Balance Sheet Available on request}

Monthly Salary Distribution		
	M	F
5000 -10000	2	2
10000 - 20000	1	11
20000 - 30000	1	1
50000 - 55000	2	
Total	6	14
Lowest Paid	7000	Conservancy
Highest Paid	53000	Doctor

Kartik Kalyanram,
 Coordinator
 25 December 2019