

Health Care to Below Poverty Line Rural Families



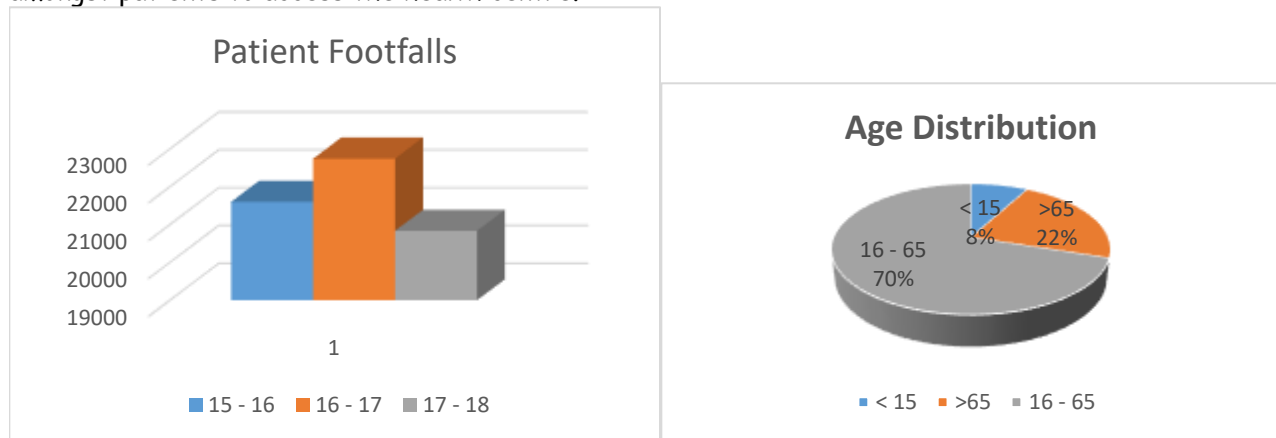
Annual Report 2017 - 18

OUTPATIENT

The year past has kept the RHC as busy as ever, with **20834** (a decrease of 9%) accessing the health centre. In our 18th year of functioning 259, 171 patients have been treated at the RHC

The OPD data for the year past as well as the trend line for the past three years is shown below.

Affordability and quality of service rendered were the two most important components in the decision amongst patients to access the health centre.



PROGRAMMES - patient participatory

Eye Care

All patients screened for Cataract are being done free through Governmental Programmes. Younger patients needed counselling on eye care with smart phone/computer usage. A few surgeries and glasses were subsidised.

Ante Natal

All deliveries were Institutional. Working with the ASHAs has proved helpful. They are involved in tracking mothers through pregnancy, delivery, post-natal care as well as babies through their 1st year. Hospital deliveries are partly supported.

Under 15s

1655 children: Diagnoses ranging from Common Cold, Viral fevers, Type I Diabetes, Malnutrition to various Congenital disorders. Care for children from within the Valley is subsidised
Hospital admissions for all children are subsidised depending on fund availability

Senior Citizens

4648 elder citizens. Diagnoses ranged from NCDs, Malnutrition, Malignancies, Degenerative disorders etc
Care is subsidised depending upon the level of financial support available

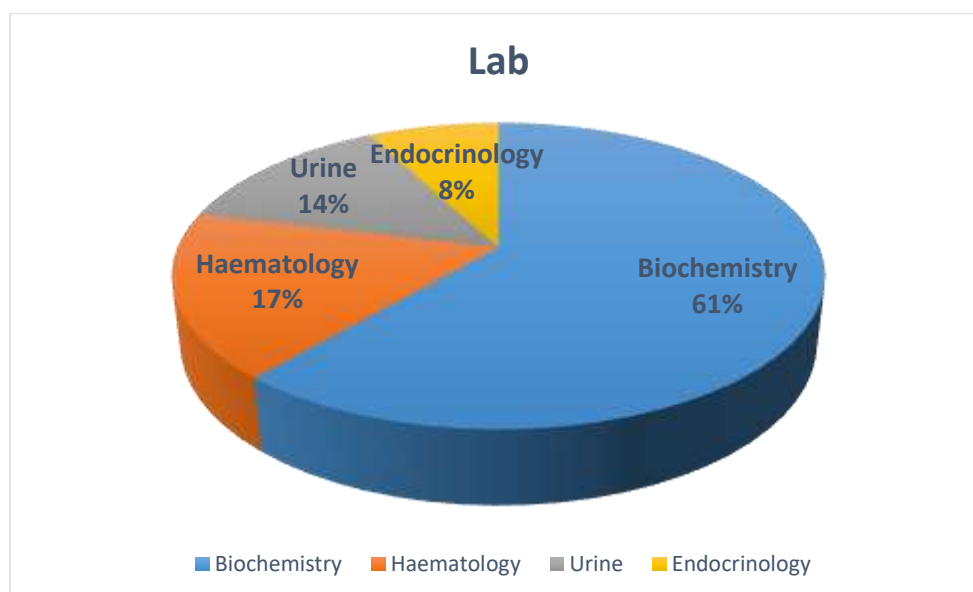
DIAGNOSTIC CENTRE

More than **52,000** tests done. (an increase of 30%), driven primarily by the increasing number of patients with hypertension and diabetes.

Laboratory

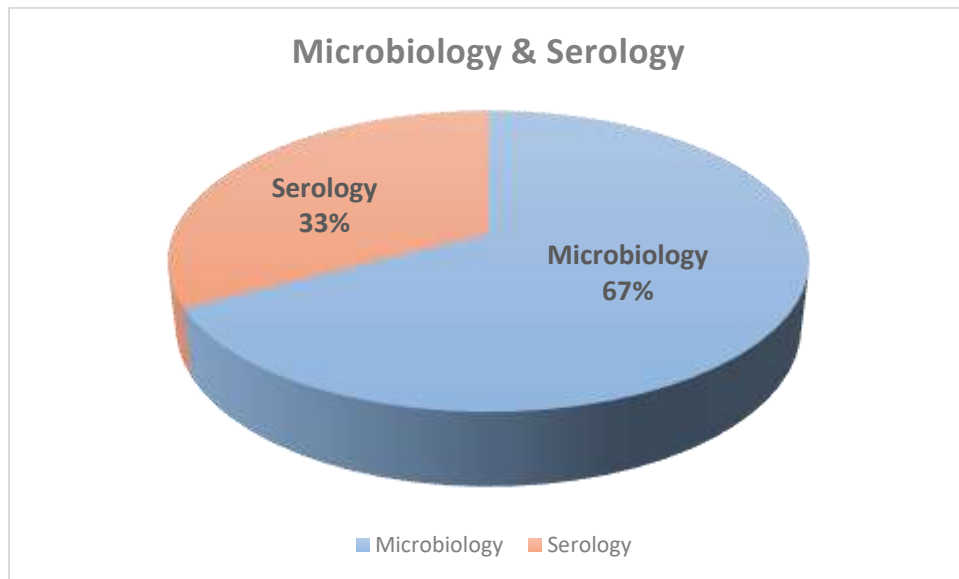
Equipment: Automated Urine, Hematology, 3 para coagulation analysers. Semi-Automatic Biochemistry analyser, HbA1C.

Higher end tests particularly for endocrine assays are being sent to a NABL accredited lab in Hyderabad



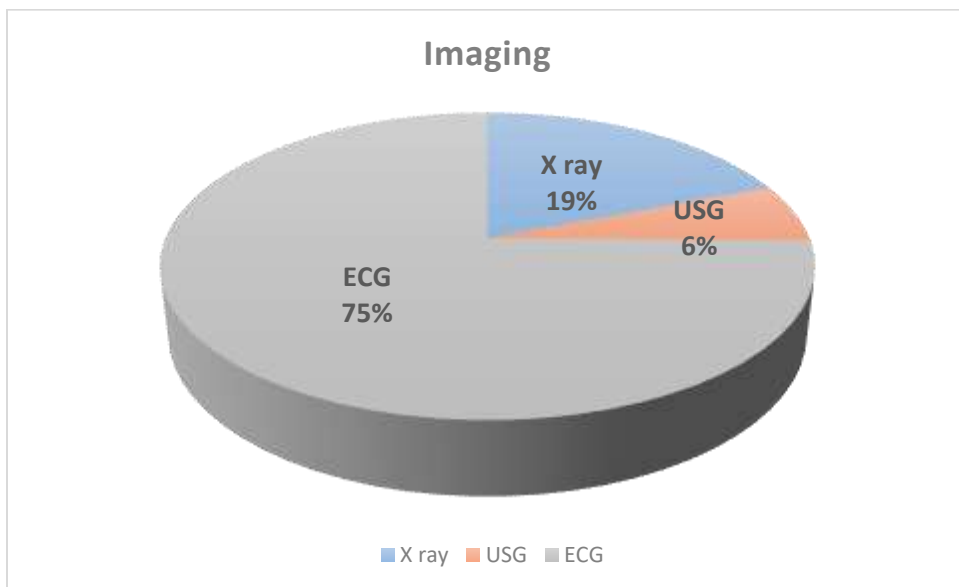
Microbiology

Fully equipped to handle bacterial cultures from all specimens - about 600 cultures done annually



Imaging

X ray - a 100 mA X ray, Part time radiographer - 415 X Rays done - primarily of the Chest
Ultrasound - About 130 done - a very useful adjunct to diagnosis



ELECTRONIC MEDICAL RECORDS: The system is working well. It has helped trace records of patients who have misplaced their case sheets, data retrieval etc.

Research Projects:

1. **cVEDA (Consortium for the Assessment of Vulnerabilities to Externalising Disorders and Addictions):** www.cveda.org

Rishi Valley Rural Health Centre is one of the sites for this joint ICMR (Indian Council of Medical Research) - MRC UK (Medical Research Council) research project. This is a multicentric study aimed at assessing possible cause factors for various mental health issues.

The approval for inclusion of RV as a site came in Mid-February and the project got off ground in March 2018.

It's been a steep learning curve for the doctors as well as staff involved since it is the first time that we are doing a large scale Neuro psychological assessments of ages 6 to 23. We have to learn how to manage mental health issues, family violence etc. as we come across participants with such problems.

2. **VASCULAR DISEASES:** A skeleton staff maintains the deep freezes and samples stored in them. Data analysis is ongoing at Monash University in Melbourne.

Research Publications

For an updated list please click on the following link:

Donors

Without our many donors, the RHC would not be able to function. Many donors small and large have contributed to the growth of the RHC. Each one of our donors are important for us, very small bit helps in our endeavours. I would, on behalf of all the patients who have benefited take the opportunity to thank all of them.

The Rishi Valley Alumni Association set up in the US, has been in the forefront of raising funds. Thank you all at RiVAA for this.

Donation Options

We have re worked our donation options and updated the same on our website. www.rishivalley.org

Essentially the Health Centre is looking to set up a **corpus**, the interest from which would help us in meeting our budget deficit. I would request any interested donors/philanthropists to contact me directly.

All donations in India get a tax benefit u/s 80 G of IT act in India.

In the US: Please donate through **Rishi Valley Alumni Association - RiVAA** (www.rivaa.org) a not for profit 501 (C) (3) organization.

Email to donate@rivaa.org

In the UK: Please donate through

Shishukunj International: <http://www.shishukunj.net>

Contact: Manish Shah: manish_shah@yahoo.co.uk , info@shishukunj.net

Tel: 00449854141216

Shishukunj, Shishukunj Bhavan, 25-27 High Street,
Edgware, Middx, HA8 7EE, Tel/Fax: 020 8381 1818

FINANCIALS

RISHI VALLEY RURAL HEALTH CENTRE (Figures in thousands)			
Income		Expenditure	
Donations	2411	Total Expenditure before depreciation	8860
Other income including Consultations	3930	Depreciation	534
Contribution from RVS, RIVER & interest on Corpus Fund	2974		
Total Income	9315	Total Expenditure	9394

Excess of Expenditure over Income: (78)

During the year donation of Rs.18,51,000/- was received towards corpus fund.

The closing balance of the Corpus Fund is Rs.142.78 lakhs. During the year Rs.12.64 Lakhs from RHC Development Fund (being the interest earned on Corpus Fund) was utilized.

(NB: Detailed Balance Sheet Available on request)

Monthly Salary Distribution		
	M	F
5000 -10000	2	2
10000 - 20000	1	11
20000 - 30000	1	1
50000 - 55000	2	
Total	6	14
Lowest Paid	7000	Conservancy
Highest Paid	52000	Doctor

Kartik Kalyanram,
Coordinator
30 December 2018